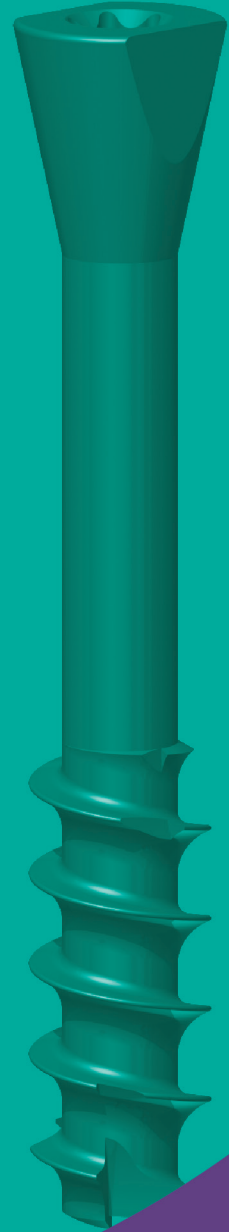
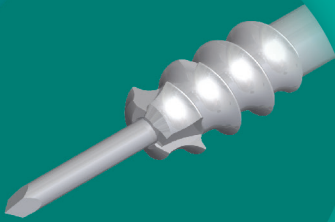


**MEDICAL
IMPLANTS**



**ASTROCAN
CANNULATED SCREWS**

ASTROLABE

is an European company certified by ISO 9001: 2015 and EN ISO 13485: 2016, which guarantees the quality of their processes. All the production is in compliance with the European legislation for medical devices and other statutory requirements.

Its main objective is to offer a large range of high-level implants and instruments for its application, as well as follow up with new market trends.

ASTROLABE

es una empresa Europea certificada por la norma ISO 9001: 2015 e EN ISO 13485: 2016, que garantiza la calidad de sus procesos. Toda su producción está en consonancia con la legislación Europea para dispositivos médicos y otros requisitos legales.

Su objetivo principal es ofrecer una amplia gama de implantes de alto nivel e instrumentos para su aplicación, así como seguir las nuevas tendencias del mercado.

Cannulated Screw | Tornillo Canulado

- 2.7 mm.....	4
- 3.5 mm.....	5
- 4.0 mm.....	6
- 4.5 mm.....	7
- 7.0 mm.....	8

Cannulated Compression Screw | Tornillo Canulado Para Compresión

- 2.5 mm x 3.2 mm & 3.0 mm x 3.9 mm.....	9
- 3.5 mm x 4.5 mm.....	10
- 6.0 mm x 7.5 mm.....	11

Conical Head Cannulated Screw | Tornillo Canulado Con Cabeza Cónica

- 3.0 mm.....	12
---------------	----

General Accessories Accesorios Generales.....	13
--	-----------

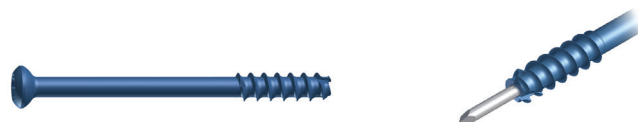
General Instruments Instrumentos Generales.....	14
--	-----------

2.7 mm

CANNULATED SCREW | TORNILLO CANULADO

Ø2.7 MM CANNULATED SCREW, PARTLY THREADED TORNILLO CANULADO CON ROSCA PARCIAL

15.28.03.27020 to / para	20 mm – 40 mm, 2 mm increments 20 mm – 40 mm, incrementos de 2 mm
15.28.03.27060	45 mm – 60 mm, 5 mm increments 45 mm – 60 mm, incrementos de 5 mm



INSTRUMENTS INSTRUMENTOS

09.01.04.20095	Drill Bit, Cannulated, Øext. 2.0 x Øint. 1.2 x 95 mm, twist length 26 mm, AO coupling Broca Canulada Øext. 2.0 x Øint. 1.2 x 95 mm, helicoidal 26 mm, Conexión AO	1
09.01.10.20095	Drill Bit, Cannulated, Øext. 2.0 x Øint. 1.2 x 95 mm, twist length 24 mm Broca Canulada Øext. 2.0 x Øint. 1.2 x 95 mm, helicoidal 24 mm	1
09.02.02.27000	Countersink, Cannulated, Ø2.7 mm, AO Coupling Avellanador Canulado Ø2.7 mm, Conexión AO	1
09.03.03.27000	Tap, Cannulated, Ø2.7 mm, AO Coupling Macho Canulado Ø2.7 mm, Conexión AO	1
09.04.04.12050	Handle, Cannulated, AO Coupling, 120mm, Black Mango Canulado, AO, 120mm, Neg	1
09.07.08.08091	Shaft Screwdriver, Cannulated, Torx-8, 90 mm, AO Coupling, Blue Code Destornillador Intercambiable Canulado, Torx-8, 90 mm, Conexión AO, Código Azul	1
09.08.02.16090	Gauge 90 mm, Direct Measuring, for Wire 150 mm, Ø up to 1.6 mm Medidor 90 mm, para Aguja 150 mm, Ø hasta 1.6 mm	1
09.10.06.00150	Plate and Screw Holding Forceps, Angled, 150 mm Pinza para Placas y Tornillos, en Ángulo, 150 mm	1
09.50.03.00090	Box w/ Brackets, 250 x 250 x 40 mm, Cannulated Screw 2.7 mm Caja con Soportes, 250 x 250 x 40 mm, Tornillo Canulado 2.7 mm	1
09.50.04.00090	Implant Case, Cannulated Screw 2.7 mm Estuche para Implantes, Tornillo Canulado 2.7 mm	1
09.50.10.00150	Dispenser for K-Wire 150 mm Dispensador para Agujas de Kirschner 150 mm	1

KIRSCHNER WIRE, SS, TROCAR/ROUND AGUJA DE KIRSCHNER, ACERO, TROCAR/REDONDA

17.02.01.10150	Ø1.0 x 150 mm	10
----------------	---------------	----

WASHER ARANDELA

99.05.00.27000	Ø2.7 mm	5
----------------	---------	---

3.5 mm

CANNULATED SCREW | TORNILLO CANULADO

Ø3.5 MM CANNULATED SCREW, PARTLY THREADED
TORNILLO CANULADO CON ROSCA PARCIAL

15.28.03.35026 to / para 15.28.03.35060	26 mm – 40 mm, 2 mm increments 26 mm – 40 mm, incrementos de 2 mm
	45 mm – 60 mm, 5 mm increments 45 mm – 60 mm, incrementos de 5 mm

Ø3.5 MM CANNULATED SCREW, FULLY THREADED
TORNILLO CANULADO CON ROSCA TOTAL

15.30.03.35026 to / para 15.30.03.35060	26 mm – 40 mm, 2 mm increments 20 mm – 40 mm, incrementos de 2 mm
	45 mm – 60 mm, 5 mm increments 45 mm – 60 mm, incrementos de 5 mm

INSTRUMENTS
INSTRUMENTOS

09.01.04.25095	Drill Bit, Cannulated, Øext. 2.5 x Øint. 1.4 x 95 mm, twist length 30 mm, AO coupling Broca Canulada Øext. 2.5 x Øint. 1.4 x 95 mm, helicoidal 30 mm, Conexión AO	1
09.01.10.25095	Drill Bit, Cannulated, Øext. 2.5 x Øint. 1.4 x 95 mm, twist length 30 mm Broca Canulada Øext. 2.5 x Øint. 1.4 x 95 mm, helicoidal 30 mm	1
09.02.02.35000	Countersink, Cannulated, Ø3.5 mm, AO Coupling Avellanador Canulado Ø3.5mm, Conexión AO	1
09.03.03.35000	Tap, Cannulated, Ø3.5 mm, AO Coupling Macho Canulado Ø3.5 mm, Conexión AO	1
09.04.04.12050	Handle, Cannulated, AO Coupling, 120mm, Black Mango Canulado, AO, 120mm, Neg	1
09.07.08.10092	Shaft Screwdriver, Cannulated, Torx-10, 90 mm, AO Coupling, Yellow Code Destornillador Intercambiable Canulado, Torx-10, 90 mm, Conexión AO, Código Amarillo	1
09.08.02.16090	Gauge 90 mm, Direct Measuring, for Wire 150 mm, Ø up to 1.6 mm Medidor 90 mm, para Aguja 150 mm, Ø hasta 1.6 mm	1
09.10.06.00150	Plate and Screw Holding Forceps, Angled, 150 mm Pinza para Placas y Tornillos, en Ángulo, 150 mm	1
09.50.03.00095	Box w/ Brackets, 250 x 250 x 40 mm, Cannulated Screw 3.5 mm Caja con Soportes, 250 x 250 x 40 mm, Tornillo Canulado 3.5 mm	1
09.50.04.00095	Implant Case, Cannulated Screw 3.5 mm Estuche para Implantes, Tornillo Canulado 3.5 mm	1
09.50.10.00150	Dispenser for K-Wire 150 mm Dispensador para Agujas de Kirschner 150 mm	1

KIRSCHNER WIRE, SS, TROCAR/ROUND
AGUJA DE KIRSCHNER, ACERO, TROCAR/REDONDA

17.02.01.12150	Ø1.2 x 150 mm	10
----------------	---------------	----

WASHER
ARANDELA

99.05.00.35000	Ø3.5 mm	5
----------------	---------	---

4.0mm

CANNULATED SCREW | TORNILLO CANULADO

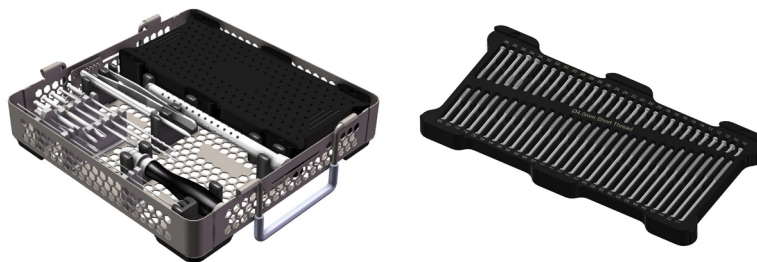
Ø4.0 MM CANNULATED SCREW, SHORT THREAD TORNILLO CANULADO, ROSCA CORTA

15.40.01.40010 to / para 15.40.01.40072	10 mm – 60 mm, 2 mm increments 10 mm – 60 mm, incrementos de 2 mm
	64 mm – 72 mm, 4 mm increments 64 mm – 72 mm, incrementos de 4 mm



Ø4.0 MM CANNULATED SCREW, LONG THREAD TORNILLO CANULADO, ROSCA LARGA

15.42.01.40016 to / para 15.42.01.40072	16 mm – 60 mm, 2 mm increments 16 mm – 60 mm, incrementos de 2 mm
	64 mm – 72 mm, 4 mm increments 64 mm – 72 mm, incrementos de 4 mm



INSTRUMENTS INSTRUMENTOS

09.01.04.27150	Drill Bit, Cannulated, Øext. 2.7 x Øint. 1.4 x 150mm, twist length 40mm, AO Coupling Broca Canulada Ø2.7 x 150mm, H-40, AO	2
09.01.10.27120	Drill Bit, Cannulated, Øext. 2.7 x Øint. 1.4 x 120mm, twist length 40mm Broca Canulada Ø2.7 x 120mm, H-40	2
09.02.02.40000	Countersink, Cannulated, Ø4.0mm, AO Coupling Avellanador Canulado Ø4.0mm, AO	1
09.03.03.40000	Tap, Cannulated, Ø4.0mm, AO Coupling Macho Canulado Ø4.0mm, AO	1
09.04.04.12050	Handle, Cannulated, AO Coupling, 120mm, Black Mango Canulado, AO, 120mm, Neg	1
09.07.08.10090	Shaft Screwdriver, Cannulated, Torx-10, 90mm, AO Coupling Destornillador Canulado, TX-10, 90mm, AO	2
09.08.02.16090	Gauge 90mm, Direct Measuring, for Wire 150mm, Ø up to 1.6mm Medidor 90mm, Aguja Ø1.6 x 150mm	1
09.10.06.00150	Plate and Screw Holding Forceps, Angled, 150mm Pinza para Placas y Tornillos, en Ángulo, 150mm	1
09.25.01.01125	Cleaning Wire, Ø1.25mm, Stylet Alambre de Limpieza Ø1.25mm, Estilete	1
09.25.01.02135	Cleaning Wire, Ø1.35mm, Brush Alambre de Limpieza Ø1.35mm, Cepillo	1

4.5 mm

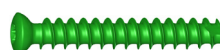
CANNULATED SCREW | TORNILLO CANULADO

Ø4.5 MM CANNULATED SCREW, PARTLY THREADED
TORNILLO CANULADO CON ROSCA PARCIAL

15.28.03.45026 to / para 15.28.03.45060	26 mm – 40 mm, 2 mm increments 26 mm – 40 mm, incrementos de 2 mm
	45 mm – 60 mm, 5 mm increments 45 mm – 60 mm, incrementos de 5 mm

Ø4.5 MM CANNULATED SCREW, FULLY THREADED
TORNILLO CANULADO CON ROSCA TOTAL

15.30.03.45026 to / para 15.30.03.45060	26 mm – 40 mm, 2 mm increments 26 mm – 40 mm, incrementos de 2 mm
	45 mm – 60 mm, 5 mm increments 45 mm – 60 mm, incrementos de 5 mm

INSTRUMENTS
INSTRUMENTOS

09.01.04.30090	Drill Bit, Cannulated, Øext. 3.0 x Øint. 1.4 x 90 mm, twist length 30 mm, AO coupling Broca Canulada Øext. 3.0 x Øint. 1.4 x 90 mm, helicoidal 30 mm, Conexión AO	1
09.01.10.30090	Drill Bit, Cannulated, Øext. 3.0 x Øint. 1.4 x 90 mm, twist length 30 mm Broca Canulada Øext. 3.0 x Øint. 1.4 x 90 mm, helicoidal 30 mm	1
09.02.02.45000	Countersink, Cannulated, Ø4.5 mm, AO Coupling Broca Canulada Øext. 3.0 x Øint. 1.4 x 90 mm, helicoidal 30 mm	1
09.03.03.45000	Tap, Cannulated, Ø4.5 mm, AO Coupling Macho Canulado Ø4.5 mm, Conexión AO	1
09.04.04.12050	Handle, Cannulated, AO Coupling, 120mm, Black Mango Canulado, AO, 120mm, Neg	1
09.07.08.10093	Shaft Screwdriver, Cannulated, Torx-10, 90 mm, AO Coupling, Green Code Destornillador Intercambiable Canulado, Torx-10, 90 mm, Conexión AO, Código Verde	1
09.08.02.16090	Gauge 90 mm, Direct Measuring, for Wire 150 mm, Ø up to 1.6 mm Medidor 90 mm, para Aguja 150 mm, Ø hasta 1.6 mm	1
09.10.06.00150	Plate and Screw Holding Forceps, Angled, 150 mm Pinza para Placas y Tornillos, en Ángulo, 150 mm	1
09.50.03.00100	Box w/ Brackets, 250 x 250 x 40 mm, Cannulated Screw 4.5 mm Caja con Soportes, 250 x 250 x 40 mm, Tornillo Canulado 4.5 mm	1
09.50.04.00100	Implant Case, Cannulated Screw 4.5 mm Estuche para Implantes, Tornillo Canulado 4.5 mm	1
09.50.10.00150	Dispenser for K-Wire 150 mm Dispensador para Agujas de Kirschner 150 mm	1

KIRSCHNER WIRE, SS, TROCAR/ROUND
AGUJA DE KIRSCHNER, ACERO, TROCAR/REDONDA

17.02.01.13150	Ø1.3 x 150 mm	10
----------------	---------------	----

WASHER
ARANDELA

99.05.00.45000	Ø4.5 mm	5
----------------	---------	---

7.0mm

CANNULATED SCREW | TORNILLO CANULADO

Ø7.0 MM CANNULATED SCREW, 16MM THREADED TORNILLO CANULADO, ROSCA 16MM

15.44.01.70030 to / para 15.44.01.70150	30 mm – 150 mm, 5 mm increments 30 mm – 150 mm, incrementos de 5 mm
---	--



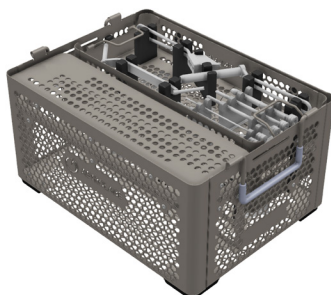
Ø7.0 MM CANNULATED SCREW, 32MM THREADED TORNILLO CANULADO, ROSCA 32MM

15.46.01.70045 to / para 15.46.01.70150	45 mm – 150 mm, 5 mm increments 45 mm – 150 mm, incrementos de 5 mm
---	--



Ø7.0 MM CANNULATED SCREW, FULLY THREADED TORNILLO CANULADO, ROSCA TOTAL

15.30.01.70020 to / para 15.30.01.70130	20 mm – 130 mm, 2 mm increments 20 mm – 130 mm, incrementos de 2 mm
---	--



INSTRUMENTS INSTRUMENTOS

09.01.01.20100	Drill Bit, Ø2.0 x 100mm, twist length 30mm, AO Coupling Broca Ø2.0 x 100mm, H-30, AO	2
09.01.05.45240	Drill Bit, Cannulated, Øext. 4.5 x Øint. 2.1 x 240mm, twist length 40mm, SZ Coupling Broca Canulada Ø4.5 x 240mm, H-40, SZ	2
09.02.03.70000	Countersink, Cannulated, Ø7.0mm, SZ Coupling Avellanador Canulado Ø7.0mm, SZ	1
09.03.06.70000	Tap, Cannulated, Ø7.0mm, SZ Coupling Macho Canulado Ø7.0mm, SZ	1
09.04.08.00050	T-Handle, Cannulated, SZ Coupling, Black Mango en T Canulado, SZ, Neg	1
09.05.01.20010	Drill Guide, Ø2.0mm, Parallel - Multiple Guía de Perforación Ø2.0mm, Paralelo - Múltiple	1
09.05.01.45000	Drill Guide, Ø4.5mm, Parallel Guía de Perforación Ø4.5mm, Paralelo	1
09.05.02.45320	Drill Guide, Ø4.5/Ø3.2mm, Double Guía de Perforación Ø4.5/Ø3.2mm, Doble	1
09.06.00.45099	Drill Sleeve, Ø4.5 x 99mm Manga de Perforación Ø4.5 x 99mm	1
09.06.02.20108	Wire Sleeve, Ø2.0 x 108mm Manga Ø2.0 x 108mm, para Aguja	2
09.06.04.45000	Holding Sleeve, Ø4.5mm and Larger Manga de Sujeción Ø4.5mm y Superiores	1
09.06.06.11080	Protection Sleeve, Ø11.0/8.0mm Manga de Protección Ø11.0/8.0mm	1
09.07.12.25200	Shaft Screwdriver, Cannulated, Torx-25, 200mm, SZ Coupling Destornillador Canulado, TX-25, 200mm, SZ	2
09.08.02.20160	Gauge 160mm, Direct Measuring, for Wire 230mm, Ø up to 2.0mm Medidor 160mm, Aguja Ø2.0 x 230mm	1
09.10.01.00010	Screw Forceps, Large Pinza para Tornillos, Grande	1
09.25.01.01200	Cleaning Wire, Ø2.0mm, Stylet Alambre de Limpieza Ø2.0mm, Estilete	1
09.25.01.02210	Cleaning Wire, Ø2.1mm, Brush Alambre de Limpieza Ø2.1mm, Cepillo	1
09.26.00.20118	Trocar, Ø2.0 x 118mm Trocar Ø2.0 x 118mm	2

2.5 mmx3.2 mm & 3.0 mmx3.9 mm CANNULATED COMPRESSION SCREW TORNILLO CANULADO PARA COMPRESIÓN

Ø2.5 x Ø3.2 mm CANNULATED COMPRESSION SCREW TORNILLO CANULADO PARA COMPRESIÓN

15.32.01.25010 to / para 15.32.01.25030	10 mm – 24 mm, 1 mm increments 10 mm – 24 mm, incrementos de 1 mm
	26 mm – 30 mm, 2 mm increments 26 mm – 30 mm, incrementos de 2 mm



Ø3.0 x Ø3.9 mm CANNULATED HIGH COMPRESSION SCREW TORNILLO CANULADO PARA COMPRESIÓN ALTA

15.34.01.30010 to / para 15.34.01.30030	10 mm – 30 mm, 1 mm increments 10 mm – 30 mm, incrementos de 1 mm
---	--



INSTRUMENTS INSTRUMENTOS

09.01.04.20095	Drill Bit, Cannulated, Øext. 2.0 x Øint. 1.2 x 95 mm, twist length 26 mm, AO Coupling Broca Canulada Øext. 2.0 x Øint. 1.2 x 95 mm, helicoidal 26 mm, Conexión AO	1
09.01.10.20095	Drill Bit, Cannulated, Øext. 2.0 x Øint. 1.2 x 95 mm, twist length 24 mm Broca Canulada, Øext. 2.0 x Øint. 1.2 x 95 mm, helicoidal 24 mm	1
09.01.11.17120	Drill Cannula, Øext. 1.7 x Øint. 1.0 x 120 mm Cánula Øext. 1.7 x Øint. 1.0 x 120 mm	1
09.01.11.21120	Drill Cannula, Øext. 2.1 x Øint. 1.0 x 120 mm Cánula Øext. 2.1 x Øint. 1.0 x 120 mm	1
09.02.02.02532	Countersink, Cannulated, for Compression Screw Ø2.5 x Ø3.2 mm, AO Coupling Avellanador Canulado para Tornillo de Compresión Ø2.5 x Ø3.2 mm, Conexión AO	1
09.02.02.03039	Countersink, Cannulated, for High Compression Screw Ø3.0 x Ø3.9 mm, AO Coupling Avellanador Canulado para Tornillo de Compresión Alta Ø3.0 x Ø3.9 mm, Conexión AO	1
09.02.05.02532	Countersink, Cannulated, for Compression Screw Ø2.5 x Ø3.2 mm Avellanador Canulado para Tornillo de Compresión Ø2.5 x Ø3.2 mm	1
09.02.05.03039	Countersink, Cannulated, for High Compression Screw Ø3.0 x Ø3.9 mm Avellanador Canulado para Tornillo de Compresión Alta Ø3.0 x Ø3.9 mm	1
09.04.04.12050	Handle, Cannulated, AO Coupling, 120 mm, Black Mango Canulado, Conexión AO, 120 mm, Negro	1
09.04.06.00000	Drill Guide Handle Mango para Guía Broca	1
09.07.00.20070	Screwdriver, Hexagonal 2.0 mm, 70 mm Destornillador, Hexagonal 2.0 mm, 70 mm	1
09.07.08.06094	Shaft Screwdriver, Cannulated, Torx-6, 90 mm, AO Coupling, Red Code Destornillador Intercambiable Canulado, Torx-6, 90 mm, Conexión AO, Código Rojo	1
09.07.08.08090	Shaft Screwdriver, Cannulated, Torx-8, 90 mm, AO Coupling Destornillador Intercambiable Canulado, Torx-8, 90 mm, Conexión AO	1
09.08.02.16090	Gauge 90 mm, Direct Measuring, for Wire 150 mm, Ø up to 1.6 mm Medidor 90 mm, para Aguja 150 mm, Ø hasta 1.6 mm	1
09.10.06.00150	Plate and Screw Holding Forceps, Angled, 150 mm Pinza para Placas y Tornillos, en Ángulo, 150 mm	1
09.23.03.00000	Impactor for Drill Cannula Impactor para Cánula	1
09.27.05.00036	Drill Guide Insert, Ø3.6 mm, with Fixation Screw Punta Guía de Perforación, Ø3.6 mm, con Tornillo de Fijación	1
09.28.04.00000	Depth Limiter Device, for Drill Cannula Dispositivo Limitador de Profundidad para Cánulas	2
09.50.03.00105	Box w/ Brackets, 250 x 250 x 40 mm, Compression Screw 2.5/3.0 mm Caja con Soportes, 250 x 250 x 40 mm, Tornillo de Compresión 2.5/3.0 mm	1
09.50.04.00105	Implant Case, Compression Screw 2.5/3.0 mm Estuche para Implantes, Tornillo de Compresión 2.5/3.0 mm	1
09.50.10.00150	Dispenser for K-Wire 150 mm Dispensador para Agujas de Kirschner 150 mm	1

KIRSCHNER WIRE, SS, TROCAR/ROUND AGUJA DE KIRSCHNER, ACERO, TROCAR/REDONDA

17.02.01.09150	Ø0.9 x 150 mm	10
----------------	---------------	----

3.5 mmx4.5 mm

CANNULATED COMPRESSION SCREW TORNILLO CANULADO PARA COMPRESIÓN

Ø3.5 X Ø4.5 mm CANNULATED COMPRESSION SCREW TORNILLO CANULADO PARA COMPRESIÓN	
15.32.01.35018 to / para	18 mm – 40 mm, 2 mm increments 18 mm – 40 mm, incrementos de 2 mm
15.32.01.35090	45 mm – 90 mm, 5mm increments 45 mm – 90 mm, incrementos de 5 mm



INSTRUMENTS INSTRUMENTOS		
09.01.04.28120	Drill Bit, Cannulated, Øext. 2.8 x Øint. 1.4 x 120 mm, twist length 40 mm, AO Coupling Broca Canulada Øext. 2.8 x Øint. 1.4 x 120 mm, helicoidal 40 mm, Conexión AO	1
09.01.04.28150	Drill Bit, Cannulated, Øext. 2.8 x Øint. 1.4 x 150 mm, twist length 40 mm, AO Coupling Broca Canulada Øext. 2.8 x Øint. 1.4 x 150 mm, helicoidal 40 mm, Conexión AO	1
09.02.02.03545	Countersink, Cannulated, for Compression Screw Ø3.5 x Ø4.5 mm, AO Coupling Avellanador Canulado para Tornillo de Compresión Ø3.5 x Ø4.5 mm, Conexión AO	1
09.03.03.35450	Tap, Cannulated, for Compression Screw Ø3.5 x Ø4.5 mm, AO Coupling Macho Canulado para Tornillo de Compresión Ø3.5 x Ø4.5 mm, Conexión AO	1
09.04.04.12050	Handle, Cannulated, AO Coupling, 120mm, Black Mango Canulado, AO, 120mm, Neg	1
09.04.06.00000	Drill Guide Handle Mango para Guía Broca	1
09.07.08.10093	Shaft Screwdriver, Cannulated, Torx-10, 90 mm, AO Coupling, Green Code Destornillador Intercambiable Canulado, Torx-10, 90 mm, Conexión AO, Código Verde	1
09.08.02.16090	Gauge 90 mm, Direct Measuring, for Wire 150 mm, Ø up to 1.6 mm Medidor 90 mm, para Aguja 150 mm, Ø hasta 1.6 mm	1
09.10.06.00150	Plate and Screw Holding Forceps, Angled, 150 mm Pinza para Placas y Tornillos, en Ángulo, 150 mm	1
09.27.00.00050	Drill Guide Insert, Ø5.0 mm Punta Guía de Perforación, Ø5.0 mm	1
09.50.03.00110	Box w/ Brackets, 250 x 250 x 40 mm, Compression Screw 3.5 mm Caja con Soportes, 250 x 250 x 40 mm, Tornillo para Compresión 3.5 mm	1
09.50.04.00110	Implant Case, Compression Screw 3.5 mm Estuche para Implantes, Tornillo para Compresión 3.5 mm	1
09.50.10.00150	Dispenser for K-Wire 150 mm Dispensador para Aguja de Kirschner 150 mm	1

KIRSCHNER WIRE, SS, TROCAR/ROUND AGUJA DE KIRSCHNER, ACERO, TROCAR/REDONDA		
17.02.01.13150	Ø1.3 x 150 mm	10

6.0 mmx7.5 mm CANNULATED COMPRESSION SCREW TORNILLO CANULADO PARA COMPRESIÓN

Ø6.0 X Ø7.5 mm CANNULATED COMPRESSION SCREW TORNILLO CANULADO PARA COMPRESIÓN	
15.32.01.60040 to / para 15.32.01.60120	40 mm – 100 mm, 5 mm increments 40 mm – 100 mm, incrementos de 5 mm
	110 mm – 120 mm, 10 mm increments 110 mm – 120 mm, incrementos de 10 mm



INSTRUMENTS INSTRUMENTOS		
09.01.04.40121	Drill Bit, Cannulated, Øext. 4.0 x Øint. 1.8 x 120 mm, fully twisted, AO Coupling Broca Canulada Øext. 4.0 x Øint. 1.8 x 120 mm, helicoidal total, Conexión AO	1
09.01.04.40150	Drill Bit, Cannulated, Øext. 4.0 x Øint. 1.8 x 150 mm, twist length 40 mm, AO Coupling Broca Canulada Øext. 4.0 x Øint. 1.8 x 150 mm, helicoidal 40 mm, Conexión AO	1
09.02.02.06075	Countersink, Cannulated, for Compression Screw Ø6.0 x Ø7.5 mm, AO Coupling Avellanador Canulado para Tornillo de Compresión Ø6.0 x Ø7.5 mm, Conexión AO	1
09.03.03.60750	Tap, Cannulated, for Compression Screw Ø6.0 x Ø7.5 mm, AO Coupling Macho Canulado para Tornillo de Compresión Ø6.0 x Ø7.5 mm, Conexión AO	1
09.04.07.00050	T-Handle, Cannulated, AO Coupling, Black Mango en T Canulado, Conexión AO, Negro	1
09.07.04.25100	Shaft Screwdriver, Torx-25, 100 mm, AO Coupling Destornillador Intercambiable, Torx-25, 100 mm, Conexión AO	1
09.07.08.25100	Shaft Screwdriver, Cannulated, Torx-25, 100 mm, AO Coupling Destornillador Intercambiable Canulado, Torx-25, 100 mm, Conexión AO	1
09.07.08.25150	Shaft Screwdriver, Cannulated, Torx-25, 150 mm, AO Coupling Destornillador Intercambiable Canulado, Torx-25, 150 mm, Conexión AO	1
09.08.02.20120	Gauge 120 mm, Direct Measuring, for Wire 180 mm, Ø up to 2.0 mm Medidor 120 mm, para Aguja 180 mm, Ø hasta 2.0 mm	1
09.10.06.00150	Plate and Screw Holding Forceps, Angled, 150 mm Pinza para Placas y Tornillos, en Ángulo, 150 mm	1
09.50.03.00115	Box w/ Brackets, 250 x 250 x 40 mm, Compression Screw 6.0 mm Caja con Soportes, 250 x 250 x 40 mm, Tornillo para Compresión 6.0 mm	1
09.50.04.00115	Implant Case, Compression Screw 6.0 mm Estuche para Implantes, Tornillo para Compresión 6.0 mm	1
09.50.10.00200	Dispenser for K-Wire 200 mm Dispensador para Agujas de Kirschner 200 mm	1

KIRSCHNER WIRE, SS, TROCAR/ROUND AGUJA DE KIRSCHNER, ACERO, TROCAR/REDONDA		
17.02.01.16180	Ø1.6 x 180 mm	10

3.0 mm

CONICAL HEAD CANNULATED SCREW TORNILLO CANULADO CON CABEZA CÓNICA

**Ø3.0 mm CONICAL HEAD CANNULATED SCREW,
PARTLY THREADED | TORNILLO CANULADO CON CABEZA CÓNICA,
ROSCA PARCIAL**

15.28.09.30012
to / para
15.28.09.30028

12 mm – 28 mm, 2 mm increments
12 mm – 28 mm, incrementos de 2 mm



INSTRUMENTS INSTRUMENTOS		
09.02.00.30010	Countersink, Cannulated, for Conical Head Screw Ø3.0 mm <i>Avellanador Canulado para Tornillo con Cabeza Cónica Ø3.0 mm</i>	1
09.02.02.30010	Countersink, Cannulated, for Conical Head Screw Ø3.0 mm, AO Coupling <i>Avellanador Canulado para Tornillo con Cabeza Cónica Ø3.0 mm, Conexión AO</i>	1
09.04.04.12050	Handle, Cannulated, AO Coupling, 120 mm – Black <i>Mano Canulado, Conexión AO, 120 mm, Negro</i>	1
09.05.16.45000	Osteotomy Saw Guide 45° <i>Guía de Osteotomía 45°</i>	1
09.05.16.50000	Osteotomy Saw Guide 50° <i>Guía de Osteotomía 50°, 0 mm</i>	1
09.05.16.50001	Osteotomy Saw Guide 50°, -1mm <i>Guía de Osteotomía 50°, -1 mm</i>	1
09.05.16.50002	Osteotomy Saw Guide 50°, -2mm <i>Guía de Osteotomía 50°, -2 mm</i>	1
09.05.17.55000	Osteotomy Saw Guide 55°, for Distal Metatarsal, 0mm <i>Guía de Osteotomía 55° para Metatarsiana Distal, 0 mm</i>	1
09.05.17.55001	Osteotomy Saw Guide 55°, for Distal Metatarsal, -1mm <i>Guía de Osteotomía 55° para Metatarsiana Distal, -1 mm</i>	1
09.05.17.55002	Osteotomy Saw Guide 55°, for Distal Metatarsal, -2mm <i>Guía de Osteotomía 55° para Metatarsiana Distal, -2 mm</i>	1
09.05.17.55003	Osteotomy Saw Guide 55°, for Distal Metatarsal, -3mm <i>Guía de Osteotomía 55° para Metatarsiana Distal, -3 mm</i>	1
09.05.17.55004	Osteotomy Saw Guide 55°, for Distal Metatarsal, -4mm <i>Guía de Osteotomía 55° para Metatarsiana Distal, -4 mm</i>	1
09.05.17.55005	Osteotomy Saw Guide 55°, for Distal Metatarsal, -5mm <i>Guía de Osteotomía 55° para Metatarsiana Distal, -5 mm</i>	1
09.05.17.55006	Osteotomy Saw Guide 55°, for Distal Metatarsal, -6mm <i>Guía de Osteotomía 55° para Metatarsiana Distal, -6 mm</i>	1
09.05.17.55007	Osteotomy Saw Guide 55°, for Distal Metatarsal, -7mm <i>Guía de Osteotomía 55° para Metatarsiana Distal, -7 mm</i>	1
09.05.18.00000	Adjustable Saw Guide <i>Guía de Osteotomía Ajustable</i>	1
09.07.08.06090	Shaft Screwdriver, Cannulated, Torx-6, 90 mm, AO Coupling <i>Destornillador Intercambiable, Torx-6, 90 mm, Conexión AO</i>	1
09.08.02.14040	Gauge 40 mm, Direct Measuring, for Wire 100 mm, Ø up to 1.4 mm <i>Medidor 40 mm, para Aguja 100 mm, Ø hasta 1.4 mm</i>	1
09.10.06.00150	Plate and Screw Holding Forceps, Angled, 150 mm <i>Pinza para Placas y Tornillos, en Ángulo, 150 mm</i>	1
09.50.03.00120	Box w/ Brackets, 250 x 250 x 40 mm, CH Cannulated Screw 3.0 mm <i>Caja con Soportes, 250 x 250 x 40 mm, Tornillo Canulado con Cabeza Cónica 3.0 mm</i>	1
09.50.04.00120	Implant Case, CH Cannulated Screw 3.0 mm <i>Estuche para Implantes, Tornillo Canulado con Cabeza Cónica 3.0 mm</i>	1
09.50.10.00150	Dispenser for K-Wire 150 mm <i>Dispensador para Agujas de Kirschner 150 mm</i>	2

KIRSCHNER WIRE, SS, TROCAR/ROUND AGUJA DE KIRSCHNER, ACERO, TROCAR/REDONDA		
17.02.01.09100	Ø0.9 x 100 mm	10
17.02.01.12100	Ø1.2 x 100 mm	10

Kirschner Wires, Trocar/Round Agujas de Kirschner, Trocar/Redonda

Stainless steel | Acero inoxidable

Ref.	Ø x Length Longitud
17.02.01.09100	0.9 x 100 mm
17.02.01.09150	0.9 x 150 mm
17.02.01.10150	1.0 x 150 mm
17.02.01.11100	1.1 x 100 mm
17.02.01.12100	1.2 x 100 mm
17.02.01.12150	1.2 x 150 mm
17.02.01.13150	1.3 x 150 mm
17.02.03.20230	2.0 x 230 mm

Pack 10un.

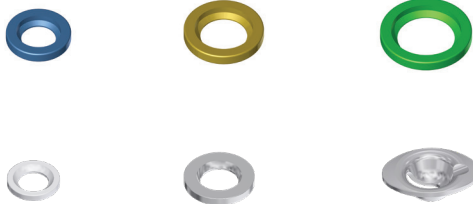


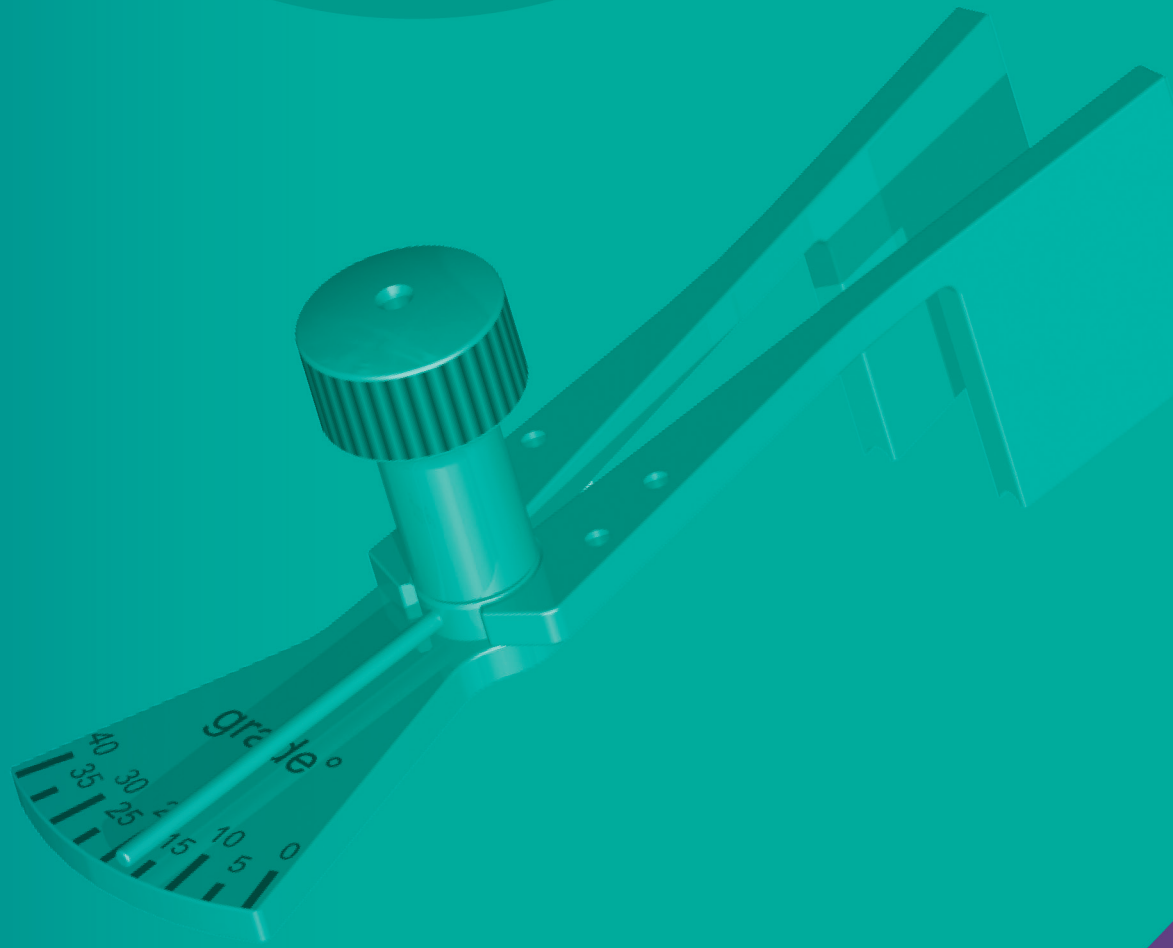
Washers | Arandelas

Titanium | Titanio

Ref.	Ø Hole Agujero
99.05.00.27000	2.7 mm
99.05.00.35000	3.5 mm
99.05.00.45000	4.5 mm
99.05.01.40000	4.0 mm
99.05.01.70000	7.0 mm
99.05.02.70000	7.0 mm

Pack 5un.





INSTRUMENTS/ INSTRUMENTOS

GENERAL INSTRUMENTS INSTRUMENTOS GENERALES

09.01.01.20100	Drill Bit, Ø2.0 x 100mm, twist length 30mm, AO Coupling <i>Broca Ø2.0 x 100mm, H-30, AO</i>
09.01.04.20095	Drill Bit, Cannulated, Øext. 2.0 x Øint. 1.2 x 95 mm, twist length 26 mm, AO Coupling <i>Broca Canulada Øext. 2.0 x Øint. 1.2 x 95 mm, helicoidal 26 mm, Conexión AO</i>
09.01.04.25095	Drill Bit, Cannulated, Øext. 2.5 x Øint. 1.4 x 95 mm, twist length 30 mm, AO Coupling <i>Broca Canulada Øext. 2.5 x Øint. 1.4 x 95 mm, helicoidal 30 mm, Conexión AO</i>
09.01.04.27150	Drill Bit, Cannulated, Øext. 2.7 x Øint. 1.4 x 150mm, twist length 40mm, AO Coupling <i>Broca Canulada Ø2.7 x 150mm, H-40, AO</i>
09.01.04.28120	Drill Bit, Cannulated, Øext. 2.8 x Øint. 1.4 x 120 mm, twist length 40 mm, AO Coupling <i>Broca Canulada Øext. 2.8 x Øint. 1.4 x 120 mm, helicoidal 40 mm, Conexión AO</i>
09.01.04.28150	Drill Bit, Cannulated, Øext. 2.8 x Øint. 1.4 x 150 mm, twist length 40 mm, AO Coupling <i>Broca Canulada Øext. 2.8 x Øint. 1.4 x 150 mm, helicoidal 40 mm, Conexión AO</i>
09.01.04.30090	Drill Bit, Cannulated, Øext. 3.0 x Øint. 1.4 x 90 mm, twist length 30 mm, AO Coupling <i>Broca Canulada Øext. 3.0 x Øint. 1.4 x 90 mm, helicoidal 30 mm, Conexión AO</i>
09.01.04.40121	Drill Bit, Cannulated, Øext. 4.0 x Øint. 1.8 x 120 mm, fully twisted, AO Coupling <i>Broca Canulada Øext. 4.0 x Øint. 1.8 x 120 mm, helicoidal total, Conexión AO</i>
09.01.04.40150	Drill Bit, Cannulated, Øext. 4.0 x Øint. 1.8 x 150 mm, twist length 40 mm, AO Coupling <i>Broca Canulada Øext. 4.0 x Øint. 1.8 x 150 mm, helicoidal 40 mm, Conexión AO</i>
09.01.05.45240	Drill Bit, Cannulated, Øext. 4.5 x Øint. 2.1 x 240mm, twist length 40mm, SZ Coupling <i>Broca Canulada Ø4.5 x 240mm, H-40, SZ</i>
09.01.10.20095	Drill Bit, Cannulated, Øext. 2.0 x Øint. 1.2 x 95 mm, twist length 24 mm <i>Broca Canulada Øext. 2.0 x Øint. 1.2 x 95 mm, helicoidal 24 mm</i>
09.01.10.25095	Drill Bit, Cannulated, Øext. 2.5 x Øint. 1.4 x 95 mm, twist length 30 mm <i>Broca Canulada Øext. 2.5 x Øint. 1.4 x 95 mm, helicoidal 30 mm</i>
09.01.10.27120	Drill Bit, Cannulated, Øext. 2.7 x Øint. 1.4 x 120mm, twist length 40mm <i>Broca Canulada Ø2.7 x 120mm, H-40</i>
09.01.10.30090	Drill Bit, Cannulated, Øext. 3.0 x Øint. 1.4 x 90 mm, twist length 30 mm <i>Broca Canulada Øext. 3.0 x Øint. 1.4 x 90 mm, helicoidal 30 mm</i>
09.01.11.17120	Drill Cannula, Øext. 1.7 x Øint. 1.0 x 120 mm <i>Cánula Øext. 1.7 x Øint. 1.0 x 120 mm</i>
09.01.11.21120	Drill Cannula, Øext. 2.1 x Øint. 1.0 x 120 mm <i>Cánula Øext. 2.1 x Øint. 1.0 x 120 mm</i>
09.02.00.30010	Countersink, Cannulated, for Conical Head Screw Ø3.0 mm <i>Avellanador Canulado para Tornillo con Cabeza Cónica Ø3.0 mm</i>
09.02.02.02532	Countersink, Cannulated, for Compression Screw Ø2.5 x Ø3.2 mm, AO Coupling <i>Avellanador Canulado para Tornillo de Compresión Ø2.5 x Ø3.2 mm, Conexión AO</i>
09.02.02.03039	Countersink, Cannulated, for High Compression Screw Ø3.0 x Ø3.9 mm, AO Coupling <i>Avellanador Canulado para Tornillo de Compresión Alta Ø3.0 x Ø3.9 mm, Conexión AO</i>



GENERAL INSTRUMENTS

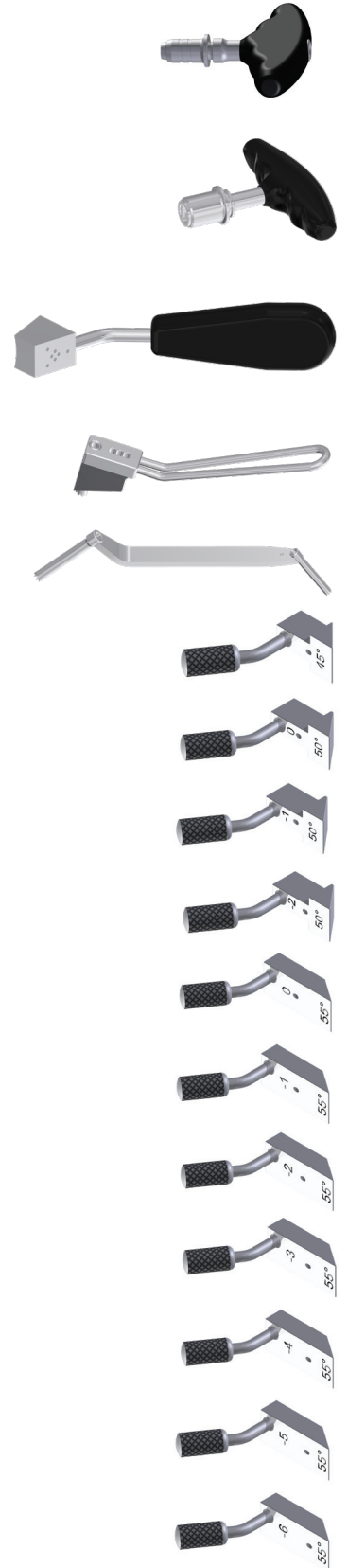
INSTRUMENTOS GENERALES

09.02.02.03545	Countersink, Cannulated, for Compression Screw Ø3.5 x Ø4.5 mm, AO Coupling <i>Avellanador Canulado para Tornillo de Compresión Ø3.5 x Ø4.5 mm, Conexión AO</i>
09.02.02.06075	Countersink, Cannulated, for Compression Screw Ø6.0 x Ø7.5 mm, AO Coupling <i>Avellanador Canulado para Tornillo de Compresión Ø6.0 x Ø7.5 mm, Conexión AO</i>
09.02.02.27000	Countersink, Cannulated, Ø2.7 mm, AO Coupling <i>Avellanador Canulado Ø2.7 mm, Conexión AO</i>
09.02.02.30010	Countersink, Cannulated, for Conical Head Screw Ø3.0 mm, AO Coupling <i>Avellanador Canulado para Tornillo con Cabeza Cónica Ø3.0 mm, Conexión AO</i>
09.02.02.35000	Countersink, Cannulated, Ø3.5 mm, AO Coupling <i>Avellanador Canulado Ø3.5 mm, Conexión AO</i>
09.02.02.40000	Countersink, Cannulated, Ø4.0mm, AO Coupling <i>Avellanador Canulado Ø4.0mm, AO</i>
09.02.02.45000	Countersink, Cannulated, Ø4.5 mm, AO Coupling <i>Avellanador Canulado Ø4.5 mm, Conexión AO</i>
09.02.03.70000	Countersink, Cannulated, Ø7.0mm, SZ Coupling <i>Avellanador Canulado Ø7.0mm, SZ</i>
09.02.05.02532	Countersink, Cannulated, for Compression Screw Ø2.5 x Ø3.2 mm <i>Avellanador Canulado para Tornillo de Compresión Ø2.5 x Ø3.2 mm</i>
09.02.05.03039	Countersink, Cannulated, for Compression Screw Ø3.0 x Ø3.9 mm <i>Avellanador Canulado para Tornillo de Compresión Alta Ø3.0 x Ø3.9 mm</i>
09.03.03.27000	Tap, Cannulated, Ø2.7 mm, AO Coupling <i>Macho Canulado Ø2.7 mm, Conexión AO</i>
09.03.03.35000	Tap, Cannulated, Ø3.5 mm, AO Coupling <i>Macho Canulado Ø3.5 mm, Conexión AO</i>
09.03.03.35450	Tap, Cannulated, for Compression Screw Ø3.5 x Ø4.5 mm, AO Coupling <i>Macho Canulado para Tornillo de Compresión Ø3.5 x Ø4.5 mm, Conexión AO</i>
09.03.03.40000	Tap, Cannulated, Ø4.0mm, AO Coupling <i>Macho Canulado Ø4.0mm, AO</i>
09.03.03.45000	Tap, Cannulated, Ø4.5 mm, AO Coupling <i>Macho Canulado Ø4.5 mm, Conexión AO</i>
09.03.03.60750	Tap, Cannulated, for Compression Screw Ø6.0 x Ø7.5 mm, AO Coupling <i>Macho Canulado para Tornillo de Compresión Ø6.0 x Ø7.5 mm, Conexión AO</i>
09.03.06.70000	Tap, Cannulated, Ø7.0mm, SZ Coupling <i>Macho Canulado Ø7.0mm, SZ</i>
09.04.04.12050	Handle, Cannulated, AO Coupling, 120mm, Black <i>Mango Canulado, AO, 120mm, Neg</i>
09.04.06.00000	Drill Guide Handle <i>Mango para Guía Broca</i>



GENERAL INSTRUMENTS INSTRUMENTOS GENERALES

09.04.07.00050	T-Handle, Cannulated, AO Coupling, Black <i>Mango en T Canulado, Conexión AO, Negro</i>
09.04.08.00050	T-Handle, Cannulated, SZ Coupling, Black <i>Mango en T Canulado, SZ, Negro</i>
09.05.01.20010	Drill Guide, Ø2.0mm, Parallel - Multiple <i>Guía de Perforación Ø2.0mm, Paralelo - Múltiple</i>
09.05.01.45000	Drill Guide, Ø4.5mm, Parallel <i>Guía de Perforación Ø4.5mm, Paralelo</i>
09.05.02.45320	Drill Guide, Ø4.5/Ø3.2mm, Double <i>Guía de Perforación Ø4.5/Ø3.2mm, Doble</i>
09.05.16.45000	Osteotomy Saw Guide 45° <i>Guía de Osteotomía 45°</i>
09.05.16.50000	Osteotomy Saw Guide 50°, 0 mm <i>Guía de Osteotomía 50°, 0 mm</i>
09.05.16.50001	Osteotomy Saw Guide 50°, -1 mm <i>Guía de Osteotomía 50°, -1 mm</i>
09.05.16.50002	Osteotomy Saw Guide 50°, -2mm <i>Guía de Osteotomía 50°, -2 mm</i>
09.05.17.55000	Osteotomy Saw Guide 55°, for Distal Metatarsal, 0mm <i>Guía de Osteotomía 55° para Metatarsiana Distal, 0 mm</i>
09.05.17.55001	Osteotomy Saw Guide 55°, for Distal Metatarsal, -1mm <i>Guía de Osteotomía 55° para Metatarsiana Distal, -1 mm</i>
09.05.17.55002	Osteotomy Saw Guide 55°, for Distal Metatarsal, -2mm <i>Guía de Osteotomía 55° para Metatarsiana Distal, -2 mm</i>
09.05.17.55003	Osteotomy Saw Guide 55°, for Distal Metatarsal, -3mm <i>Guía de Osteotomía 55° para Metatarsiana Distal, -3 mm</i>
09.05.17.55004	Osteotomy Saw Guide 55°, for Distal Metatarsal, -4mm <i>Guía de Osteotomía 55° para Metatarsiana Distal, -4 mm</i>
09.05.17.55005	Osteotomy Saw Guide 55°, for Distal Metatarsal, -5mm <i>Guía de Osteotomía 55° para Metatarsiana Distal, -5 mm</i>
09.05.17.55006	Osteotomy Saw Guide 55°, for Distal Metatarsal, -6mm <i>Guía de Osteotomía 55° para Metatarsiana Distal, -6 mm</i>



GENERAL INSTRUMENTS

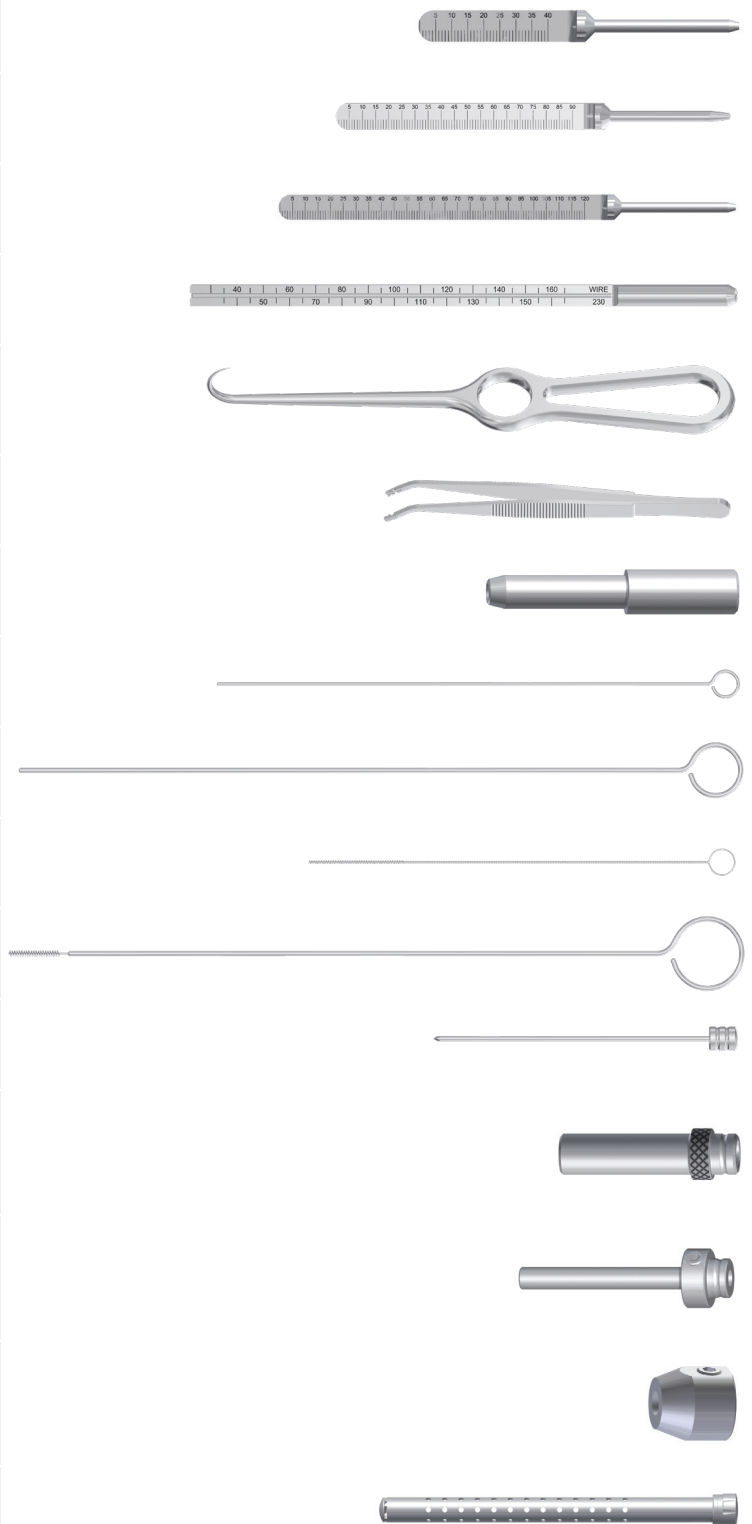
INSTRUMENTOS GENERALES

09.05.17.55007	Osteotomy Saw Guide 55°, for Distal Metatarsal, -7mm <i>Guía de Osteotomía 55° para Metatarsiana Distal, -7 mm</i>
09.05.18.00000	Adjustable Saw Guide <i>Guía de Osteotomía Ajustable</i>
09.06.00.45099	Drill Sleeve, Ø4.5 x 99mm <i>Manga de Perforación Ø4.5 x 99mm</i>
09.06.02.20108	Wire Sleeve, Ø2.0 x 108mm <i>Manga Ø2.0 x 108mm, para Aguja</i>
09.06.04.45000	Holding Sleeve, Ø4.5mm and Larger <i>Manga de Sujeción Ø4.5mm y Superiores</i>
09.06.06.11080	Protection Sleeve, Ø11.0/8.0mm <i>Manga de Protección Ø11.0/8.0mm</i>
09.07.00.20070	Screwdriver, Hexagonal 2.0 mm, 70 mm <i>Destornillador, Hexagonal 2.0 mm, 70 mm</i>
09.07.04.25100	Shaft Screwdriver, Torx-25, 100 mm, AO Coupling <i>Destornillador Intercambiable, Torx-25, 100 mm, Conexión AO</i>
09.07.08.06090	Shaft Screwdriver, Cannulated, Torx-6, 90 mm, AO Coupling <i>Destornillador Intercambiable, Torx-6, 90 mm, Conexión AO</i>
09.07.08.06094	Shaft Screwdriver, Cannulated, Torx-6, 90 mm, AO Coupling, Red Code <i>Destornillador Intercambiable Canulado, Torx-6, 90 mm, Conexión AO, Código Rojo</i>
09.07.08.08090	Shaft Screwdriver, Cannulated, Torx-8, 90 mm, AO Coupling <i>Destornillador Intercambiable Canulado, Torx-8, 90 mm, Conexión AO</i>
09.07.08.08091	Shaft Screwdriver, Cannulated, Torx-8, 90 mm, AO Coupling, Blue Code <i>Destornillador Intercambiable Canulado, Torx-8, 90 mm, Conexión AO, Código Azul</i>
09.07.08.10090	Shaft Screwdriver, Cannulated, Torx-10, 90mm, AO Coupling <i>Destornillador Canulado, TX-10, 90mm, AO</i>
09.07.08.10092	Shaft Screwdriver, Cannulated, Torx-10, 90 mm, AO Coupling, Yellow Code <i>Destornillador Intercambiable Canulado, Torx-10, 90 mm, Conexión AO, Código Amarillo</i>
09.07.08.10093	Shaft Screwdriver, Cannulated, Torx-10, 90 mm, AO Coupling, Green Code <i>Destornillador Intercambiable Canulado, Torx-10, 90 mm, Conexión AO, Código Verde</i>
09.07.08.25100	Shaft Screwdriver, Cannulated, Torx-25, 100 mm, AO Coupling <i>Destornillador Intercambiable Canulado, Torx-25, 100 mm, Conexión AO</i>
09.07.08.25150	Shaft Screwdriver, Cannulated, Torx-25, 150 mm, AO Coupling <i>Destornillador Intercambiable Canulado, Torx-25, 150 mm, Conexión AO</i>
09.07.12.25200	Shaft Screwdriver, Cannulated, Torx-25, 200mm, SZ Coupling <i>Destornillador Canulado, TX-25, 200mm, SZ</i>



GENERAL INSTRUMENTS INSTRUMENTOS GENERALES

09.08.02.14040	Gauge 40 mm, Direct Measuring, for Wire 100 mm, Ø up to 1.4 mm <i>Medidor 40 mm, para Aguja 100 mm, Ø hasta 1.4 mm</i>
09.08.02.16090	Gauge 90mm, Direct Measuring, for Wire 150mm, Ø up to 1.6mm <i>Medidor 90mm, Aguja Ø1.6 x 150mm</i>
09.08.02.20120	Gauge 120 mm, Direct Measuring, for Wire 180 mm, Ø up to 2.0 mm <i>Medidor 120 mm, para Aguja 180 mm, Ø hasta 2.0 mm</i>
09.08.02.20160	Gauge 160mm, Direct Measuring, for Wire 230mm, Ø up to 2.0mm <i>Medidor 160mm, Aguja Ø2.0 x 230mm</i>
09.09.01.00010	Sharp Hook, Large <i>Gancho, Grande</i>
09.10.06.00150	Plate and Screw Holding Forceps, Angled, 150mm <i>Pinza para Placas y Tornillos, en Ángulo, 150mm</i>
09.23.03.00000	Impactor for Drill Cannula <i>Impactor para Cánula</i>
09.25.01.01125	Cleaning Wire, Ø1.25mm, Stylet <i>Alambre de Limpieza Ø1.25mm, Estilete</i>
09.25.01.01200	Cleaning Wire, Ø2.0mm, Stylet <i>Alambre de Limpieza Ø2.0mm, Estilete</i>
09.25.01.02135	Cleaning Wire, Ø1.35mm, Brush <i>Alambre de Limpieza Ø1.35mm, Cepillo</i>
09.25.01.02210	Cleaning Wire, Ø2.1mm, Brush <i>Alambre de Limpieza Ø2.1mm, Cepillo</i>
09.26.00.20118	Trocar, Ø2.0 x 118mm <i>Trocar Ø2.0 x 118mm</i>
09.27.00.00050	Drill Guide Insert, Ø5.0 mm <i>Punta Guía de Perforación, Ø5.0 mm</i>
09.27.05.00036	Drill Guide Insert, Ø3.6 mm, with Fixation Screw <i>Punta Guía de Perforación, Ø3.6 mm, con Tornillo de Fijación</i>
09.28.04.00000	Depth Limiter Device, for Drill Cannula <i>Dispositivo Limitador de Profundidad para Cánulas</i>
09.50.10.00150	Dispenser for K-Wire 150 mm <i>Dispensador para Agujas de Kirschner 150 mm</i>



Rua José Gomes Ferreira nº 2 - Armazém 1
2660-517 São Julião do Tojal, Loures, Portugal
Tlf.: (+351) 219 672 298 | info@astrolabe-medical.com
www.astrolabe-medical.com